

# The Pro Tape range



Strong adhesive



Flexible ID



Self-laminating



Heat shrink tube



Durable labels built for  
trade professionals

MARK OF A SMART  
PROFESSIONAL



# Introducing the Pro Tape range

- 4 Tested to the extreme
- 5 Strong adhesive tape
- 6 Flexible ID tape
- 7 New self-laminating tape
- 8 Security tape
- 9 Heat shrink tube
- 10 Flag label
- 11 Stencil tape
- 12 Choose the right tape for the job
- 13 P-touch label printer compatibility
- 14/15 Available Pro Tape widths and colours

P-touch Pro Tapes are built with tough and durable professional grade materials and adhesives.

**Choose the right tape for the job using this guide.**

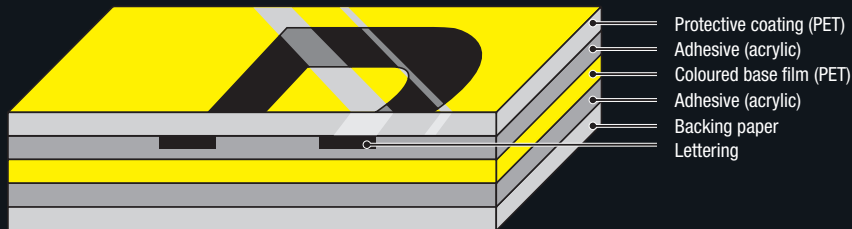
**New**



**MARK OF A SMART  
PROFESSIONAL**

# Tapes that are tested to the extreme

Brother P-touch laminated labels have been built to last, wherever you use them. With excellent resistance to water, abrasion, chemicals, fading and temperature extremes, they'll never let you down. Meaning when you label something on-site, it stays labelled.



Laminated



Temperature  
Resistant



Water  
Resistant



Fade  
Resistant



Abrasion  
Resistant



Chemical  
Resistant



Strong  
Adhesion



## Our laminated tape technology

Laminated TZe tapes consist of six layers of materials, resulting in a thin, extremely strong label. Characters are formed with a thermal transfer ink and sandwiched between two protective layers of PET (polyethylene film). The result is a virtually indestructible label that can withstand even the toughest conditions.

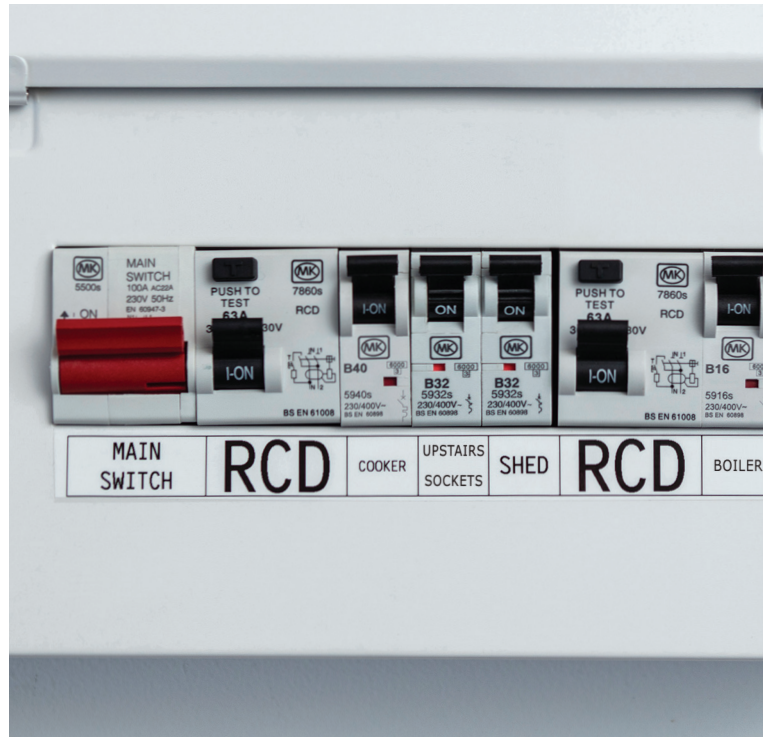
# TZe Strong adhesive laminated

For smooth, rough, textured and powder coated surfaces. With three times more strength on textured surfaces, than Brother standard tape on average.

## Recommended for:

- Warning signs and notices
- Distribution boards
- Consumer units
- Control gear and switch gear
- Electrical sockets and faceplates
- Electrical trunking and conduits
- Solar panels
- EV car charging points
- Racks
- Ports
- Patch panels
- Equipment and telecommunications outlets

UL recognised as a component to UL969



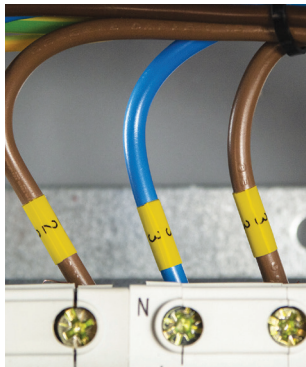
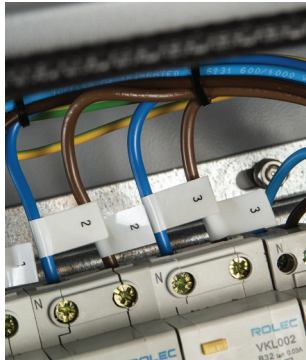
# TZe Flexible ID laminated

With a specially formulated adhesive to wrap securely around wires and cables with a diameter of 3mm or larger. Barcodes and other detailed information can be included on cable flags.

## Recommended for:

- Electrical wires and cables
- Power cords
- LAN cables (patch cord or permanent link)
- Computer cables (USB cables, data cables)

UL recognised as a component to UL 969



# TZe Self-laminating\*

Provides a protective layer over the printed area for cable marking. With our cost saving solution, text is laminated during printing which means 24mm tape is suitable for the larger diameter CAT6A cables.

## Recommended for:

- LAN cables (patch cord or permanent link)
- Computer cables (USB cables, data cables)
- Power cords

Ø3.0mm - 6.6mm (24mm), Ø3.0 - 10.4 (36mm)

UL recognised as a component to UL 969



New



\*Feature available on PT-E550W, PT-P900W, PT-P950NW and PT-D800W. Firmware update is required. Download at <https://support.brother.com/>

# TZe Security laminated

When the label is peeled, it leaves behind a 'checkerboard' pattern indicating the label has been tampered with.

## Recommended for:

- Equipment after calibration
- Computers electronic devices
- Other company property and assets
- Items sealed for security

UL recognised as a component to UL 969





# HSe Heat shrink tube

Printable tube, when shrunk down it ensures a secure fit on wires and cables. Shrink ratio 2:1.

## Recommended for:

- Electrical wires
- Cables

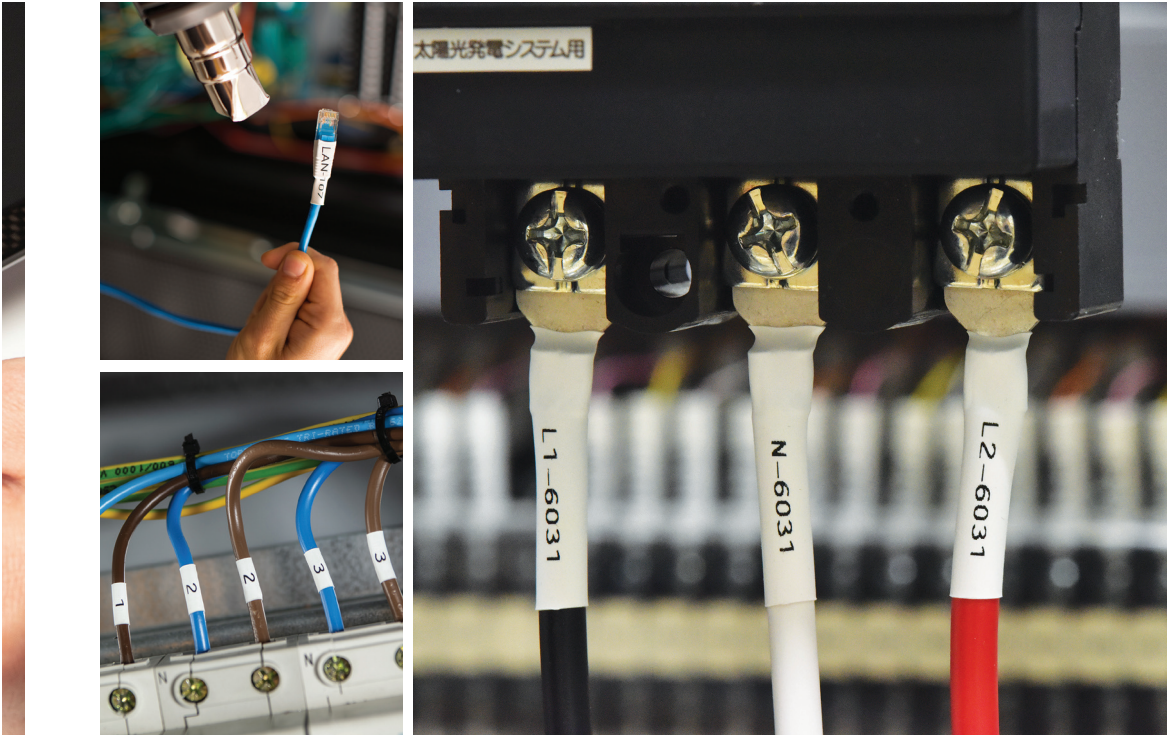
See page 12 for recommended cable diameters

UL recognised as a component to UL224

Continuous temperature rating: 125°C

Voltage rating: 300V

Flammability rating: VW-1



# FLe Flag

Die-cut non-laminated flag label. New improved single label design makes it very simple to apply once printed. Wide printable area for barcodes and other information.

## Recommended for:

- LAN cables (patch cord, permanent link, CAT5e, CAT6)
- Fibre optic cables

Ø2.0mm - 8.0mm

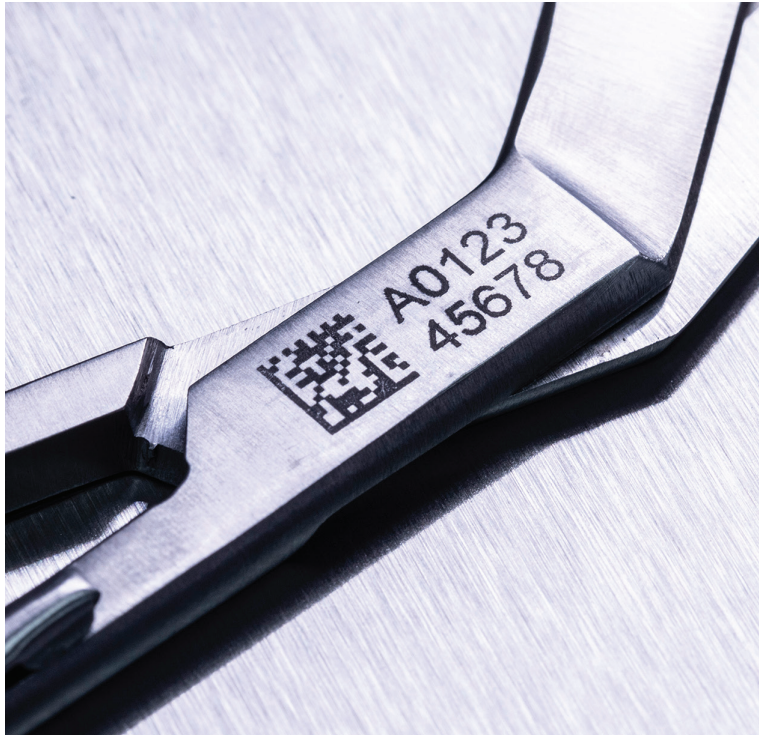


# STe Stencil

**Non-adhesive tape used as a mask to permanently mark (etch) conductive surfaces using electrolytic marking chemicals and equipment, or to mark (etch) glass using a glass etching paste.**

## **Recommended for:**

- Use on metallic and glass surfaces
- Permanent part marking  
(e.g. aerospace industry, motor industry, manufacturing, medical/healthcare)
- Product marking and customisation (e.g. scissors, knives)



# Choose the right tape for the job

Surface	Wire and cable identification				General identification		
	Flexible ID	Self-laminating*	Heat shrink tube	Flag	Strong adhesive	Security	Stencil
Smooth surfaces	✓				✓	✓	✓
Textured surfaces	●				✓	●	
Cable wrap	✓	✓	✓				
Cable flag	✓			✓			

✓ Recommended

● Acceptable

Heat shrink tube	Tape	Width	Recommended cable diameters
	HSe-211E	5.2mm	Ø0.8mm to 3.1mm
	HSe-221E	9.0mm	Ø1.6mm to 5.4mm
	HSe-231E	11.2mm	Ø2.1mm to 7.0mm
	HSe-251E	21.0mm	Ø4.2mm to 13.5mm
	HSe-261E	31.0mm	Ø6.3mm to 20mm
	HSe-611E	5.2mm	Ø0.8mm to 3.1mm
	HSe-621E	9.0mm	Ø1.6mm to 5.4mm
	HSe-631E	11.2mm	Ø2.1mm to 7.0mm
	HSe-651E	21.0mm	Ø4.2mm to 13.5mm
	HSe-661E	31.0mm	Ø6.3mm to 20mm

# P-touch label printer compatibility

		Tape type						
Model	Max tape width	Strong adhesive	Flexible ID	Security	Heat shrink tube	Self-laminating*	Flag	Stencil
PT-E110	12mm	✓	✓					
PT-E300	18mm	✓	✓	✓	✓			
PT-E550W	24mm	✓	✓	✓	✓	✓		
PT-D800W	36mm	✓	✓	✓	✓	✓	✓	✓
PT-P900W PT-P950NW	36mm	✓	✓	✓	✓	✓	✓	✓

\*Feature available on PT-E550W, PT-P900W, PT-P950NW and PT-D800W. Firmware update is required. Download at <https://support.brother.com/>





**brother**  
at your side

*P-touch*

Contact:

**[www.brother.co.uk](http://www.brother.co.uk)**

**Brother UK Ltd**

Shepley Street, Audenshaw,  
Manchester, M34 5JD.  
Tel: +44 (0) 333 777 4444  
Tel: +44 (0) 161 931 2218

All specifications correct at the time of printing (September 2020) and are subject to change. Brother is a registered trademark of Brother Industries Ltd. Brand product names are registered trademarks or trademarks of their respective companies.  
CD3554.EXTERNAL VERSION  
ZLFTPROTAPERANGEU1